

Quarterly PHASE data report: Q2 2018
SHCSCC



CHANGES FROM LAST QUARTER:

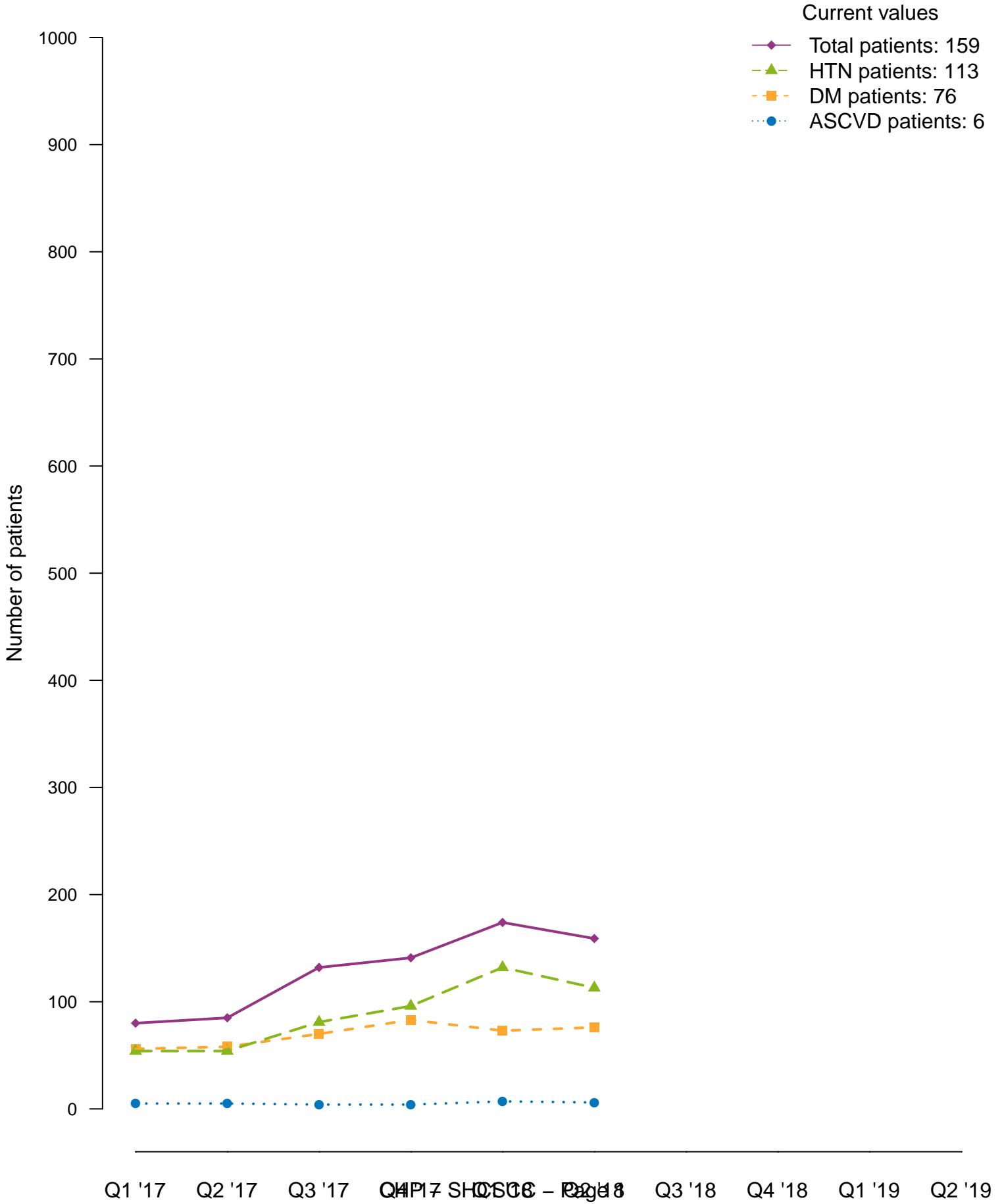
1) Added relative change since baseline (Q1 2017)

Relative change is $((\text{current value} - \text{baseline value}) / \text{baseline value}) * 100\%$

2) Added previous quarter's value to site-specific graph underneath grantee time trend graph

Number of patients at SHCSCC by diagnosis

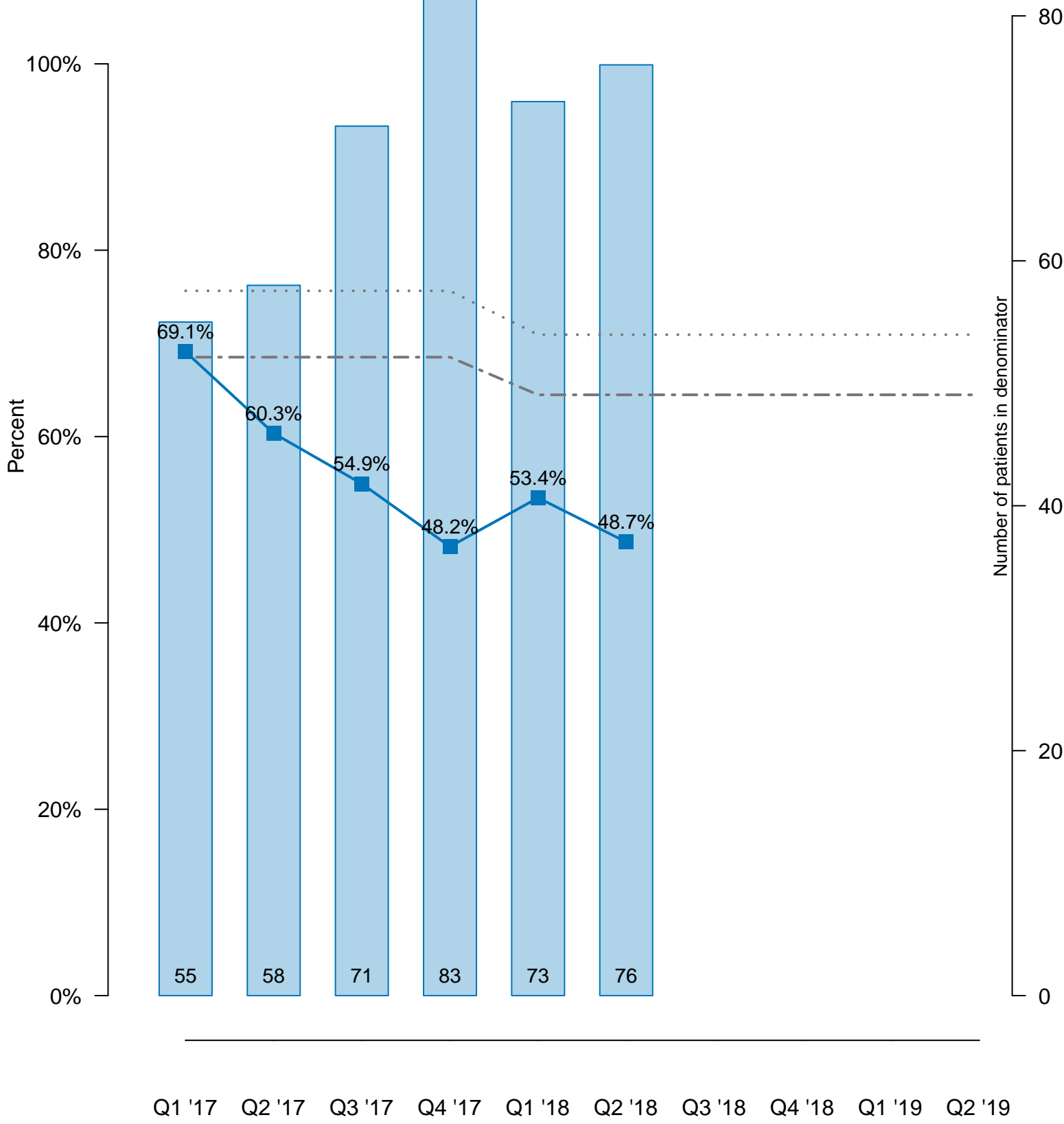
Data from 1 site(s)



Diabetes A1c < 9%
(a measure targeted in CFI)
-29.5% relative change since baseline

Not meeting HEDIS 75th percentile

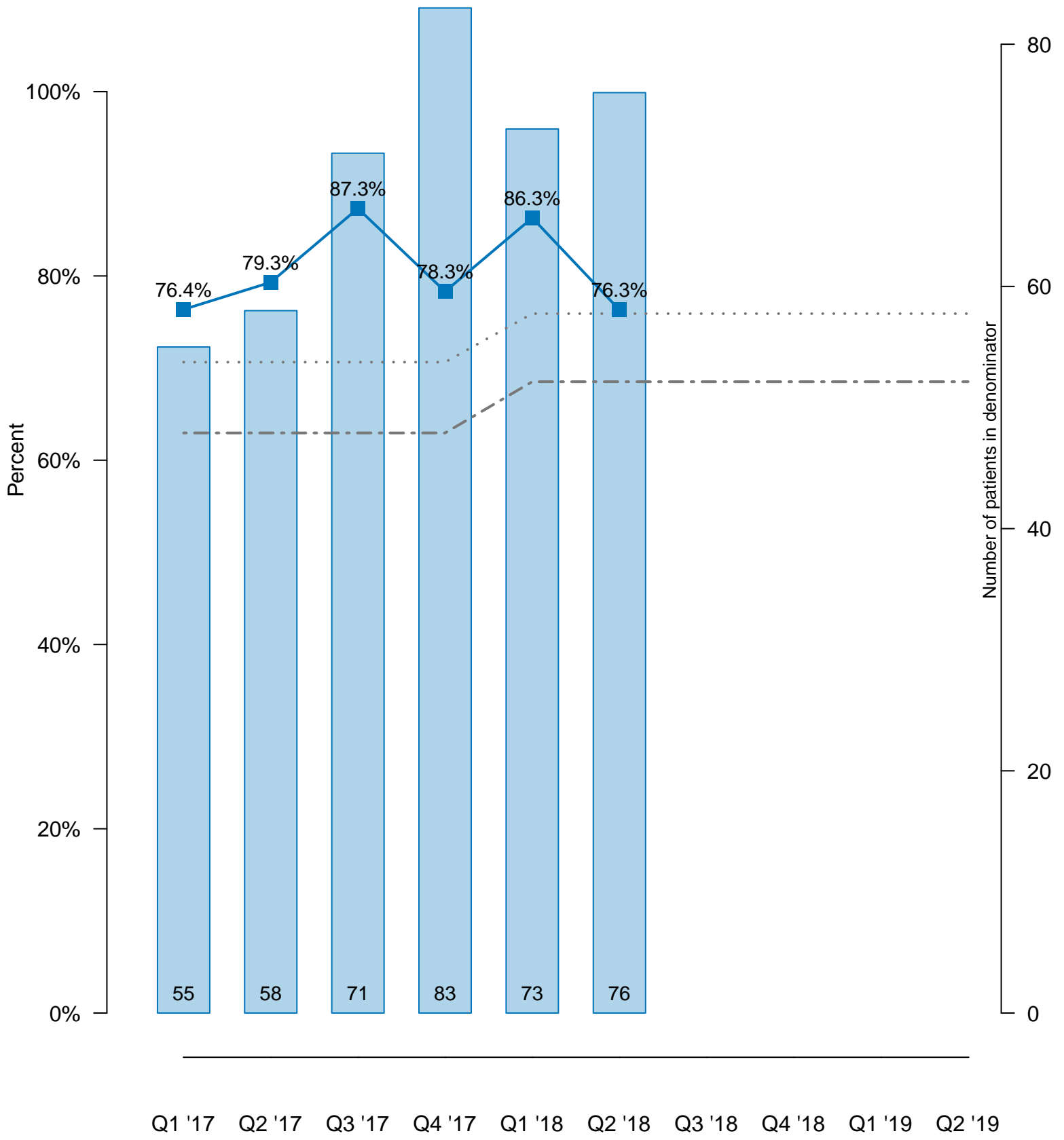
- SHCSCC
- - HEDIS 75th percentile: 64.5%
- ... HEDIS 90th percentile: 70.9%
- Denominator
- Avg. of CHP: 69.9%



Diabetes blood pressure in control -0.1% relative change since baseline

Meeting HEDIS 75th percentile

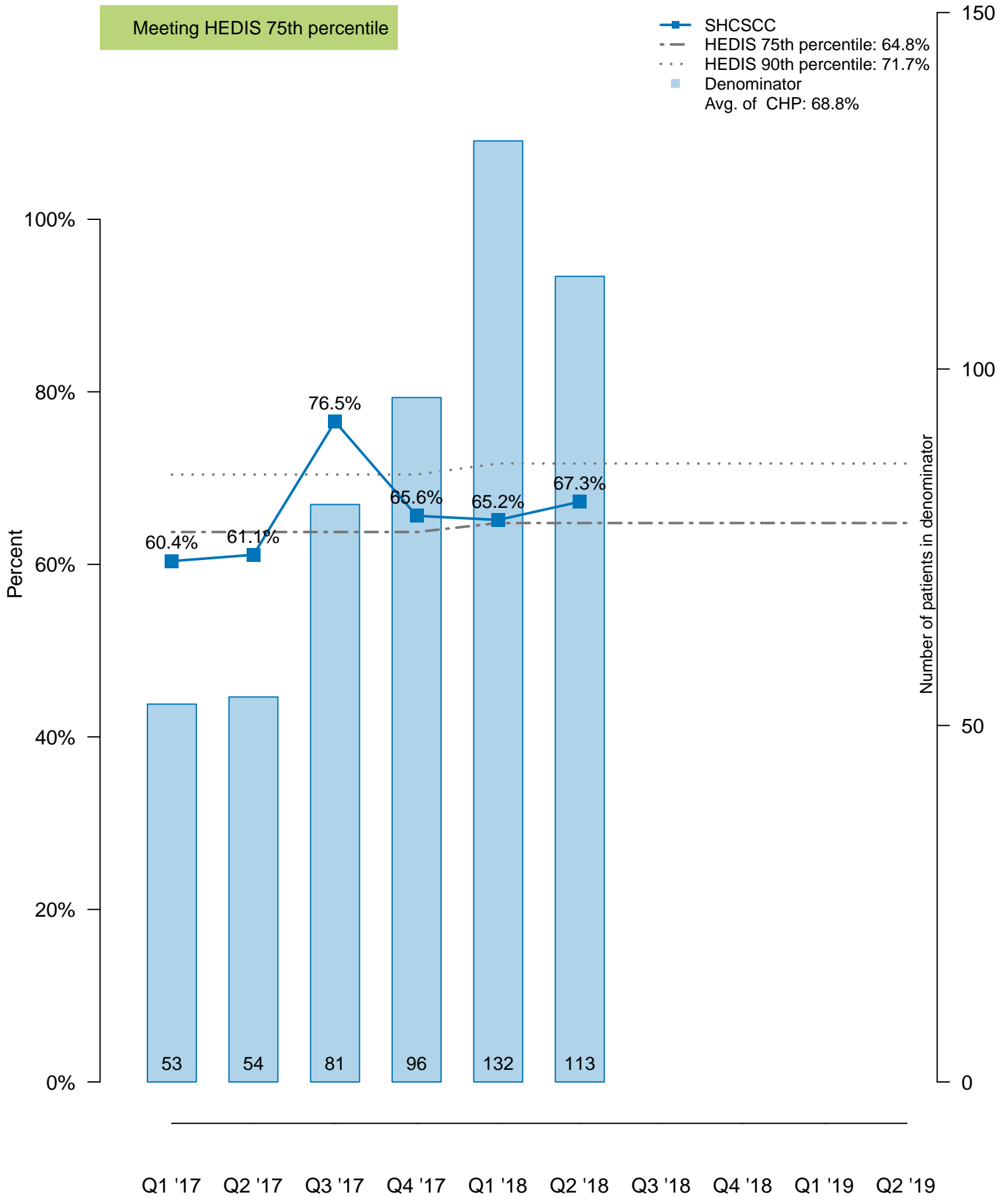
- SHCSCC
- - HEDIS 75th percentile: 68.5%
- ... HEDIS 90th percentile: 75.9%
- Denominator
- Avg. of CHP: 70.6%



**Hypertension blood pressure in control
(a measure targeted in CFI)
11.4% relative change since baseline**

Meeting HEDIS 75th percentile

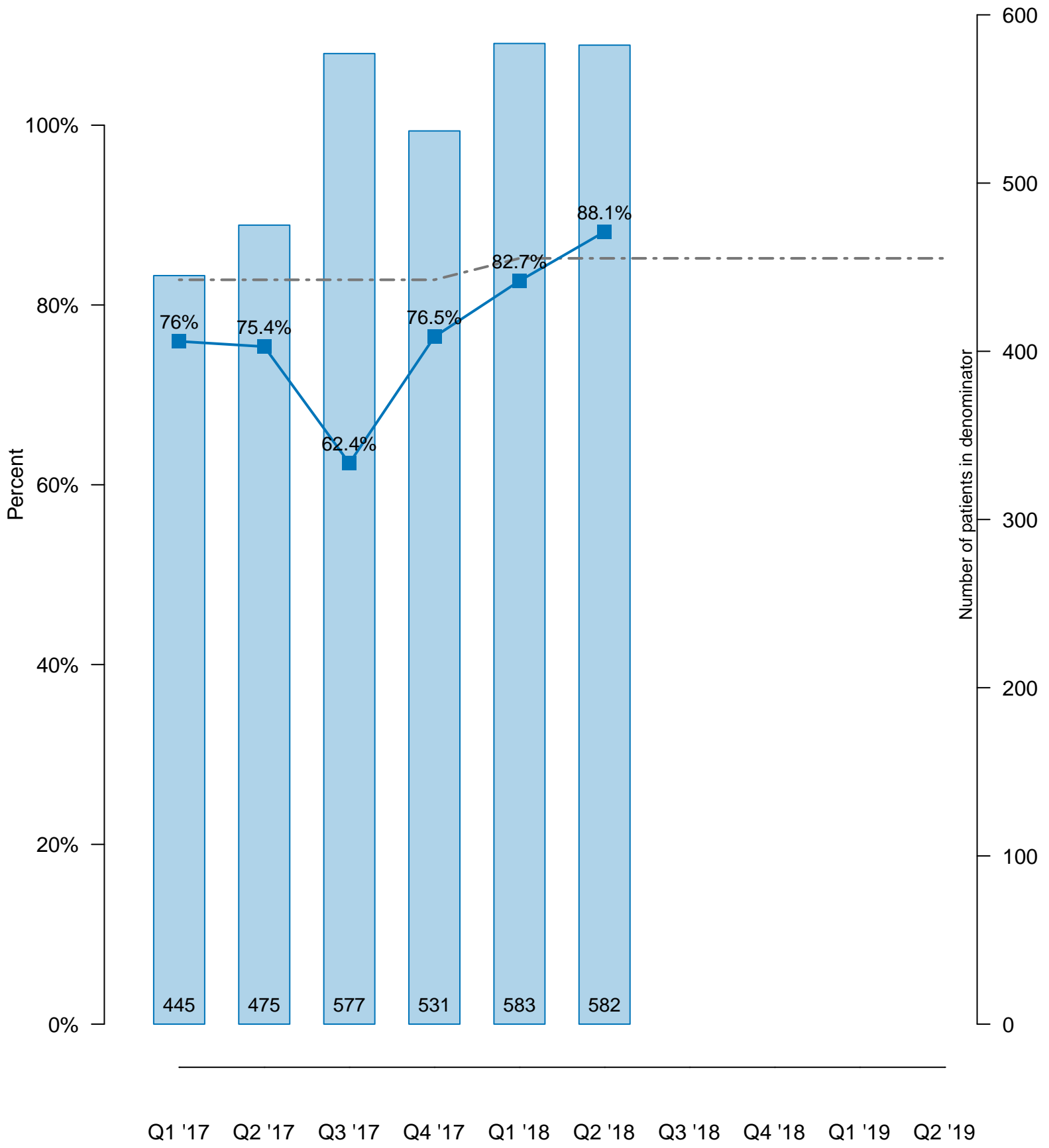
- SHCSCC
- - HEDIS 75th percentile: 64.8%
- ... HEDIS 90th percentile: 71.7%
- Denominator
- Avg. of CHP: 68.8%



Tobacco screening & follow-up 16% relative change since baseline

Meeting UDS Average

- SHCSCC
- UDS Average: 85.2%
- Denominator
Avg. of CHP: 91.1%

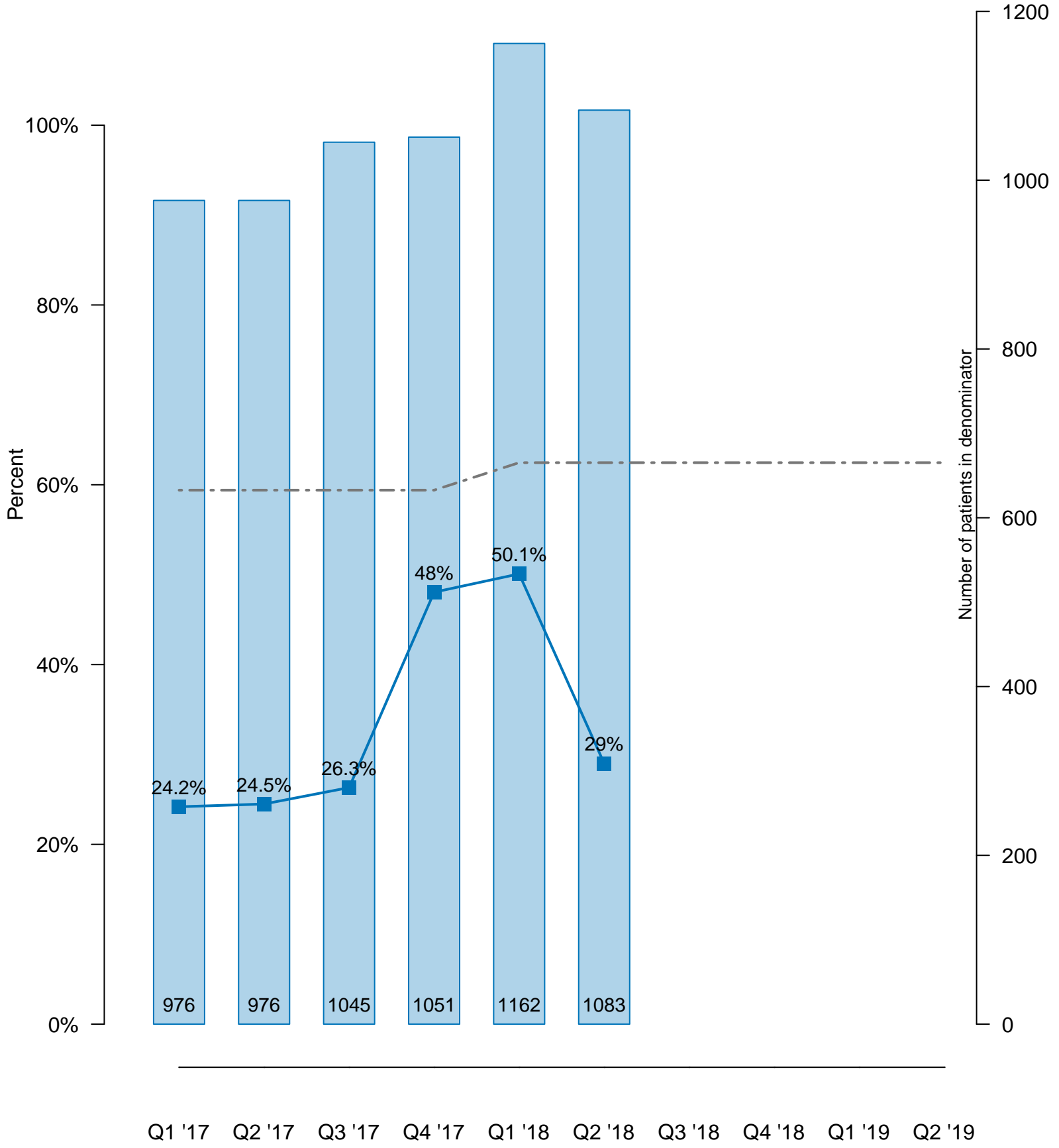


BMI screening & follow-up

19.9% relative change since baseline

Not meeting UDS Average

- SHCSCC
- UDS Average: 62.5%
- Denominator
Avg. of CHP: 72%

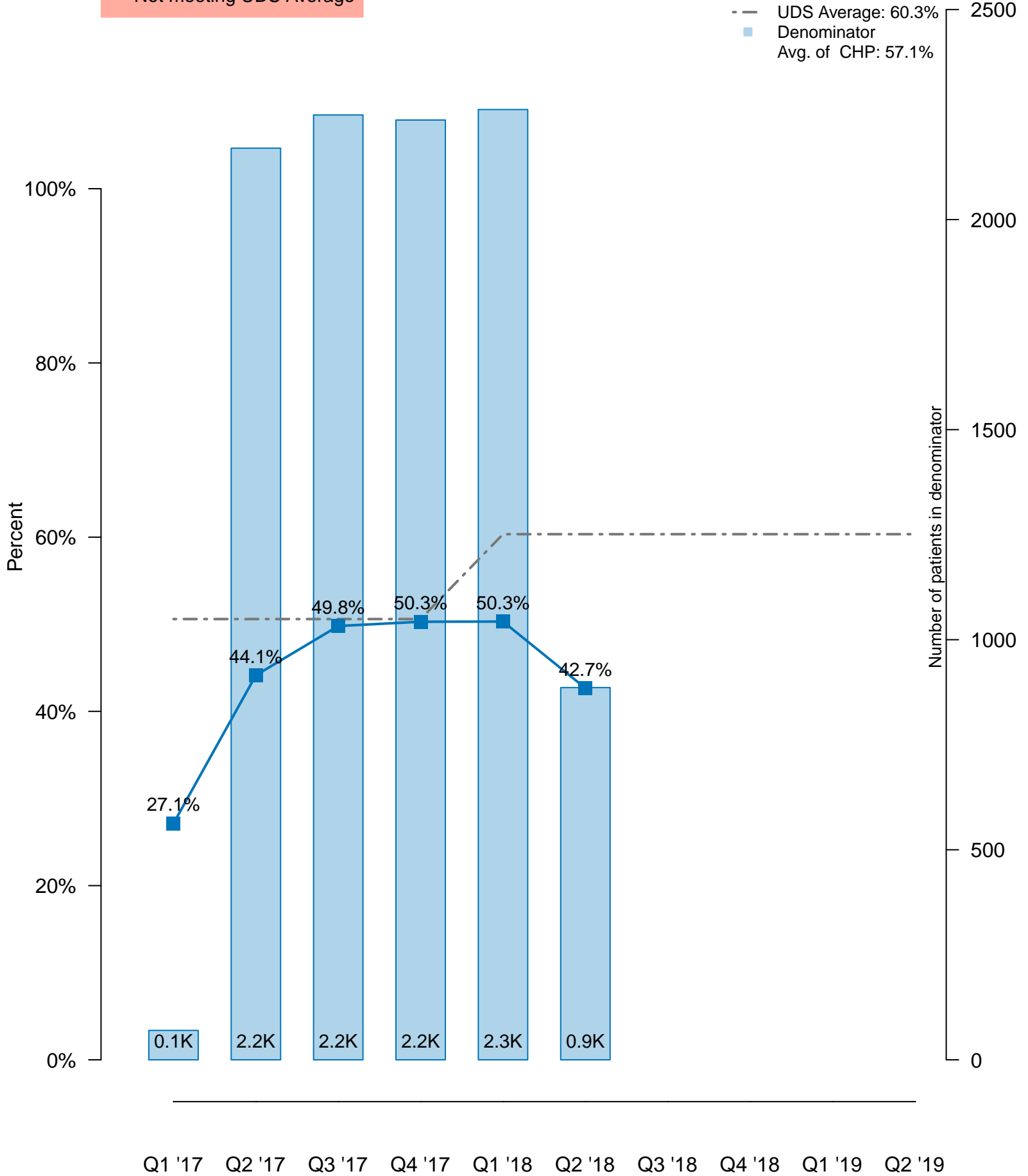


Depression screening & follow-up

57.2% relative change since baseline

Not meeting UDS Average

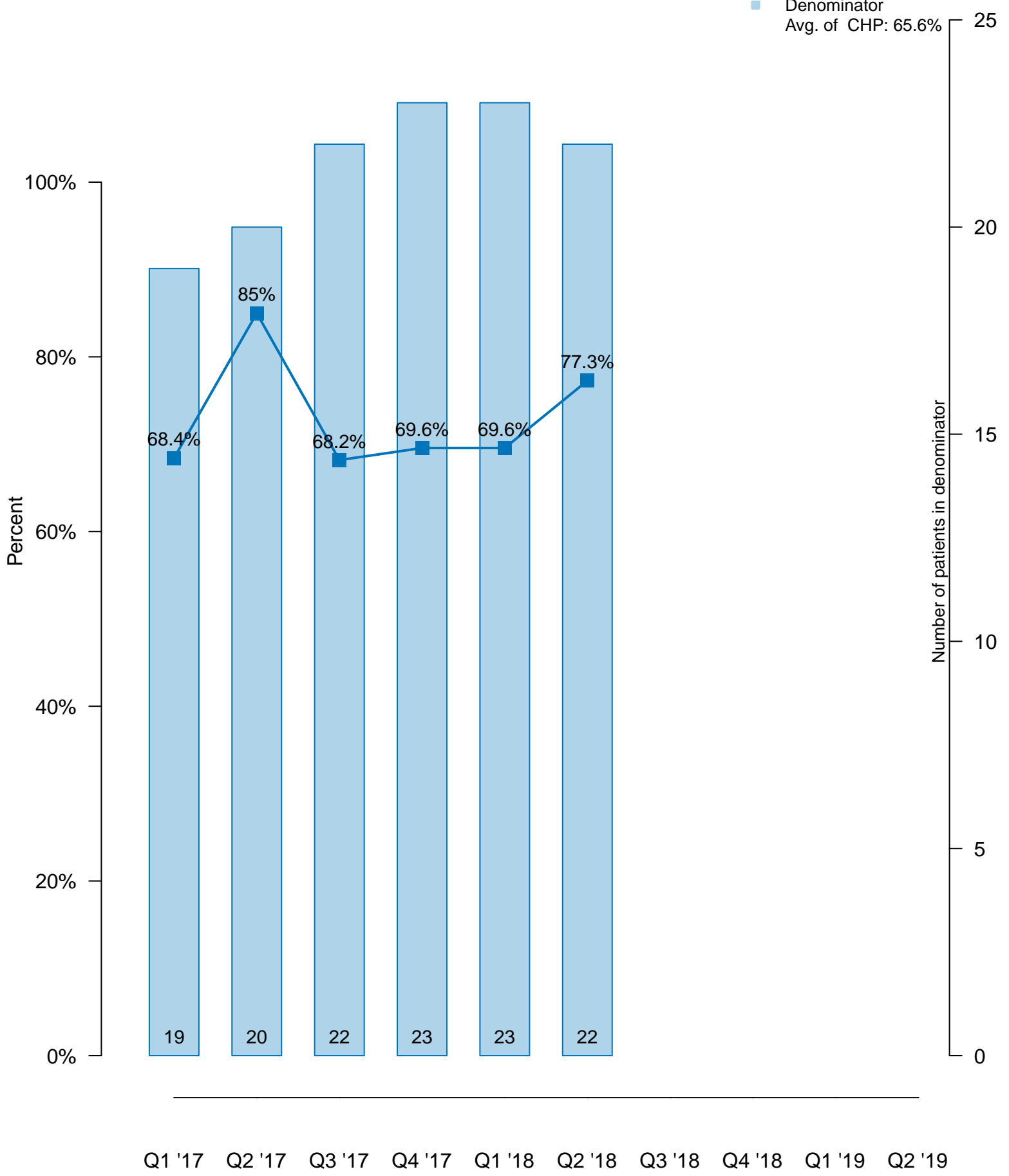
- SHCSCC
- UDS Average: 60.3%
- Denominator
Avg. of CHP: 57.1%



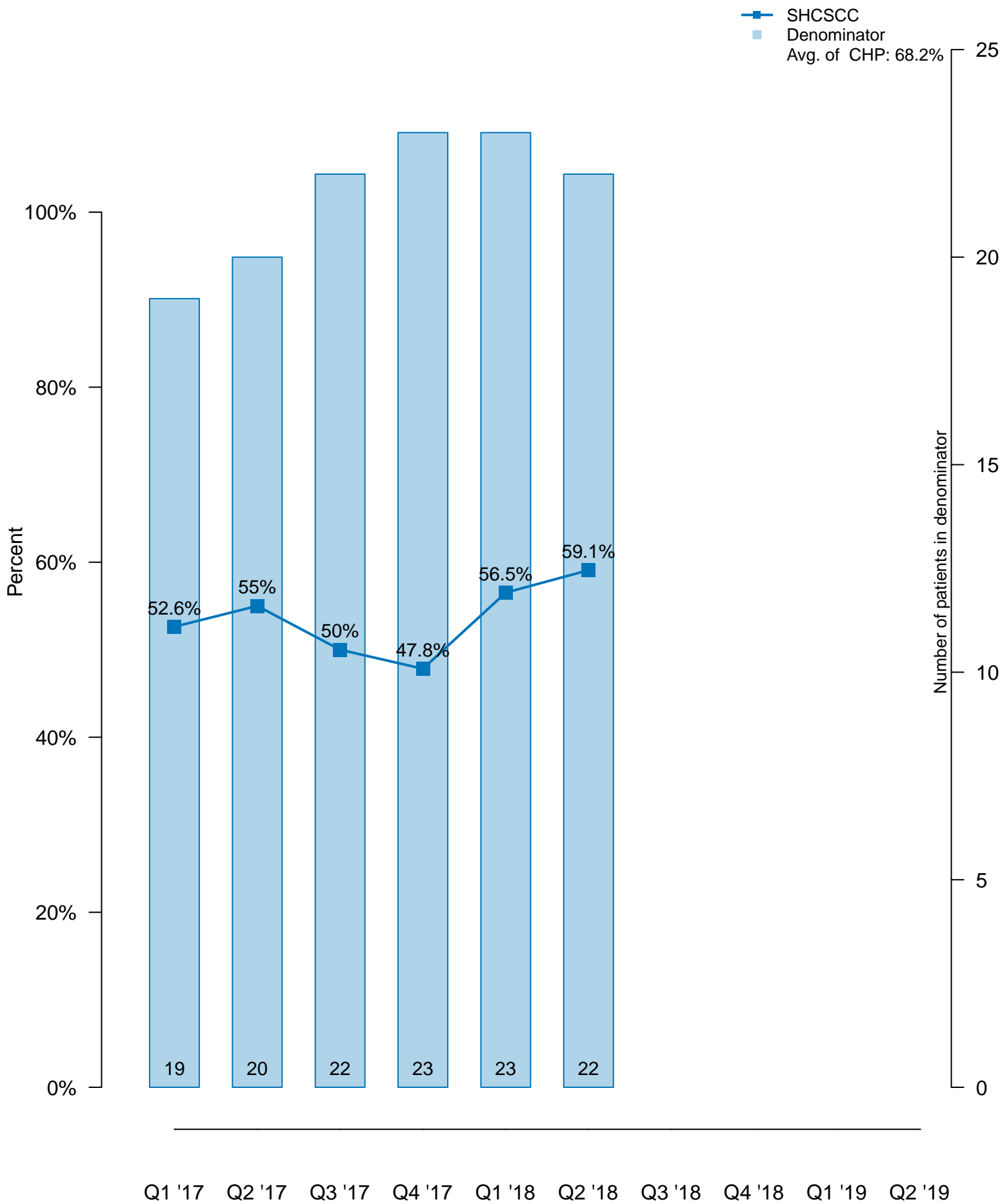
Statin prescription rate for patients with diabetes

12.9% relative change since baseline

■ SHCSCC
■ Denominator
 Avg. of CHP: 65.6%



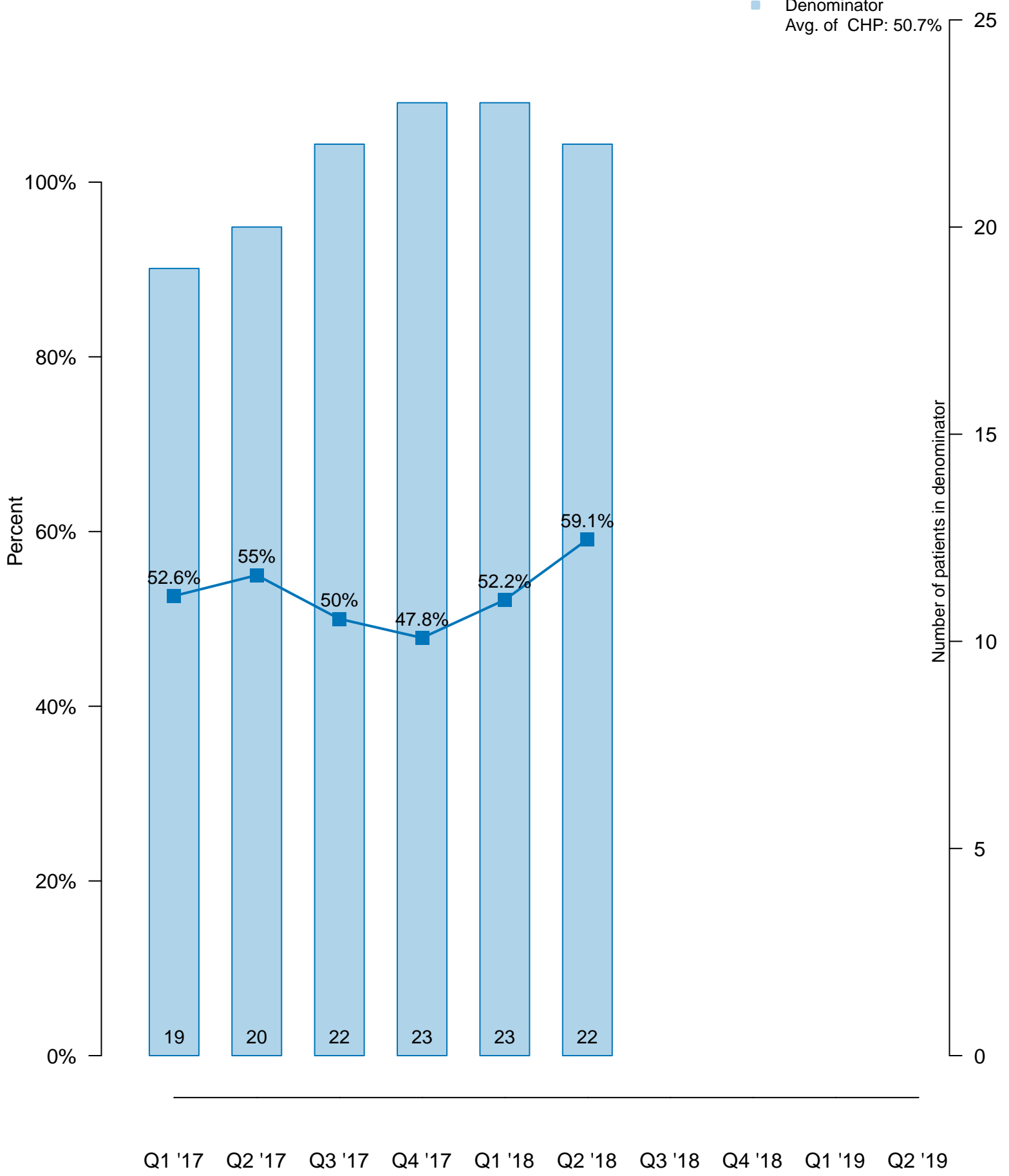
ACE/ARB prescription rate for patients with diabetes 12.3% relative change since baseline



Statin & ACE/ARB prescription rate for patients with diabetes

12.3% relative change since baseline

■ SHCSCC
■ Denominator
 Avg. of CHP: 50.7%



Oral anti-hypertensive prescription rate for patients with HTN -18.5% relative change since baseline

