

### COVID-19 Outpatient Clinics Workflow

- Influenza Like Illness (ILI) symptoms:
- Fever
  - Chills
  - Muscle Aches
  - Cough
  - Headache
  - Malaise
  - Sore throat
  - Runny nose

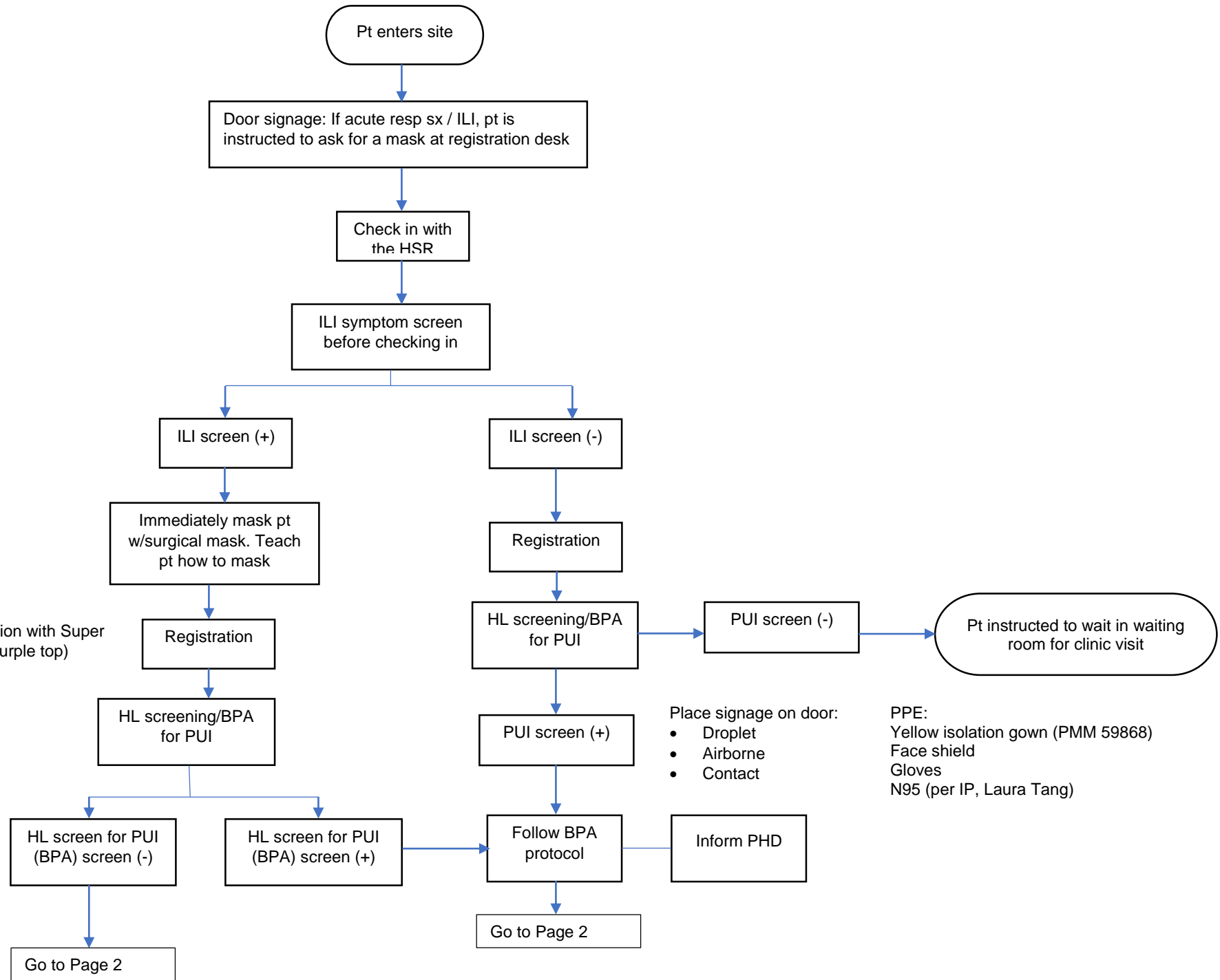
PUI screen (+) = BPA (+) or clinical assessment  
 True PUI = PHD confirmed PUI

3 I's:  
 Identify (screen)  
 Isolate (PPE)  
 Inform (alert appropriate persons)

Wipe workstation with Super Sani Wipes (purple top)

- Place signage on door:
- Droplet
  - Airborne
  - Contact

- PPE:
- Yellow isolation gown (PMM 59868)
  - Face shield
  - Gloves
  - N95 (per IP, Laura Tang)



### COVID-19 Outpatient Clinics Workflow

